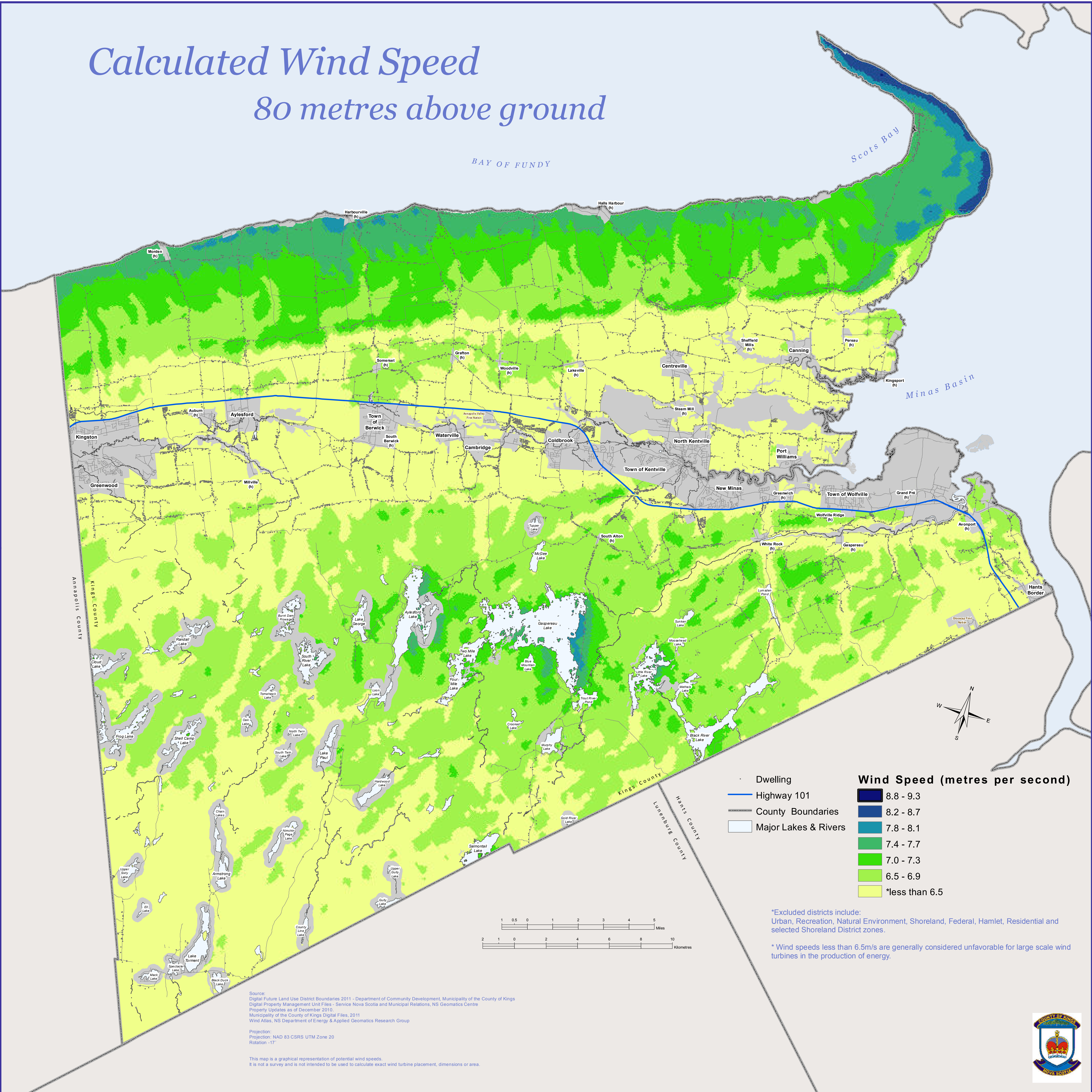


Calculated Wind Speed

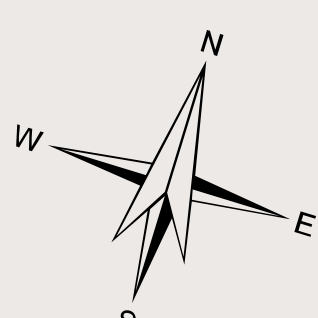
80 metres above ground



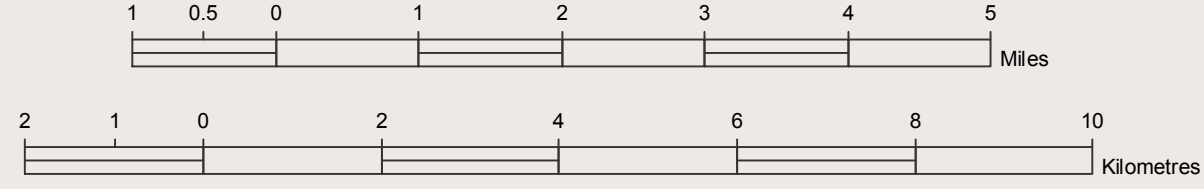
BAY OF FUNDY

Scots Bay

Minas Basin



<ul style="list-style-type: none"> Dwelling Highway 101 County Boundaries Major Lakes & Rivers 	<p>Wind Speed (metres per second)</p> <ul style="list-style-type: none"> 8.8 - 9.3 8.2 - 8.7 7.8 - 8.1 7.4 - 7.7 7.0 - 7.3 6.5 - 6.9 *less than 6.5
--	--



*Excluded districts include:
Urban, Recreation, Natural Environment, Shoreland, Federal, Hamlet, Residential and selected Shoreland District zones.

* Wind speeds less than 6.5m/s are generally considered unfavorable for large scale wind turbines in the production of energy.

Source:
Digital Future Land Use District Boundaries 2011 - Department of Community Development, Municipality of the County of Kings
Digital Property Management Unit Files - Service Nova Scotia and Municipal Relations, NS Geomatics Centre
Property Updates as of December 2010
Municipality of the County of Kings Digital Files, 2011
Wind Atlas, NS Department of Energy & Applied Geomatics Research Group

Projection:
Projection: NAD 83 CSRS UTM Zone 20
Rotation -17°

This map is a graphical representation of potential wind speeds.
It is not a survey and is not intended to be used to calculate exact wind turbine placement, dimensions or area.

